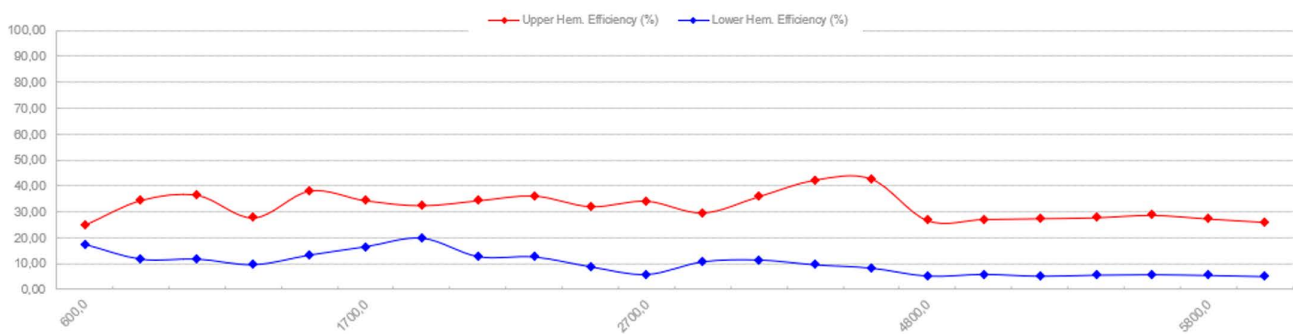
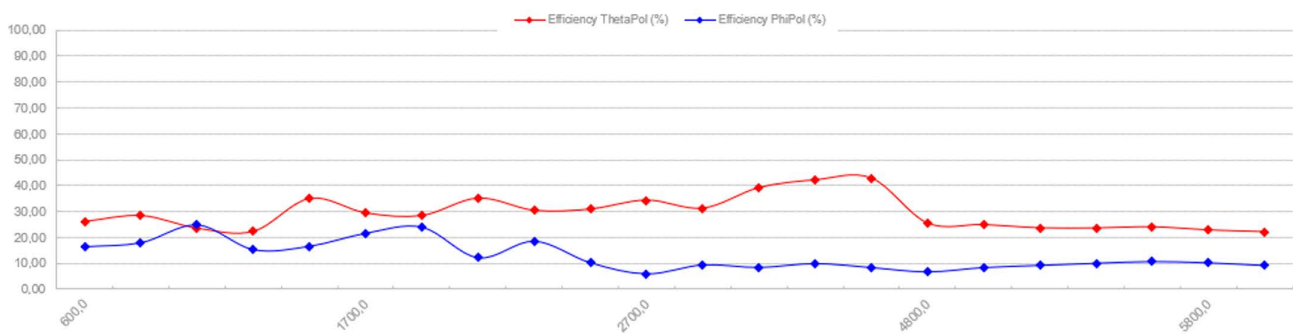
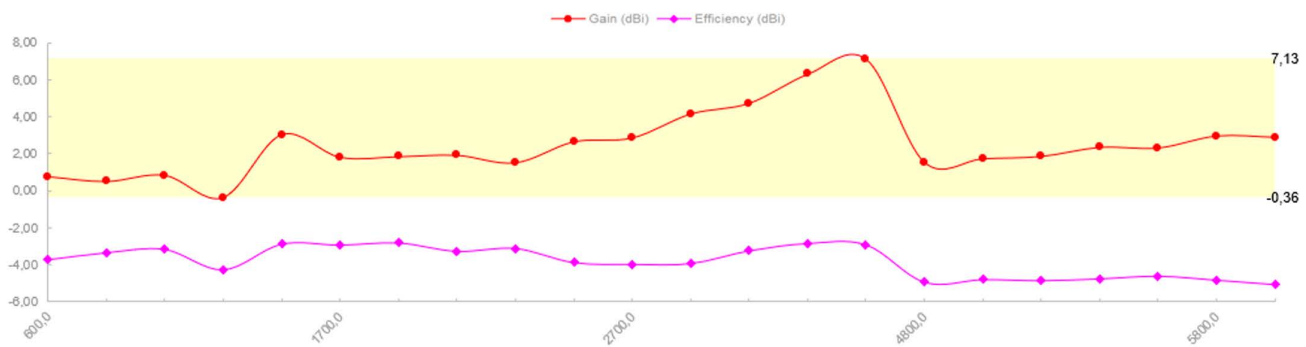
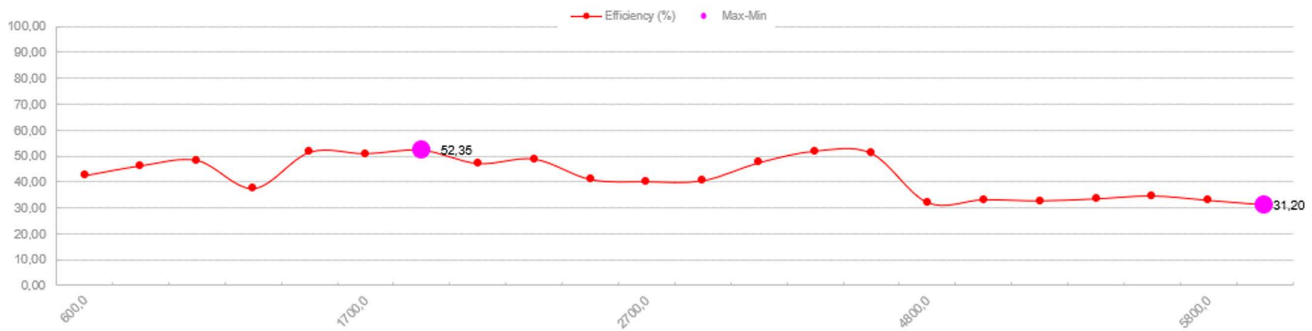
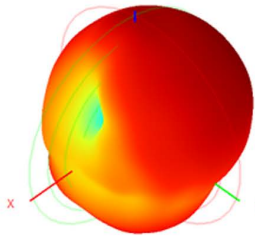


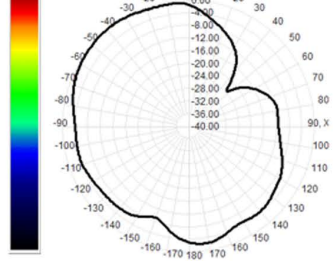
## Cell/Mobile Strahler 2



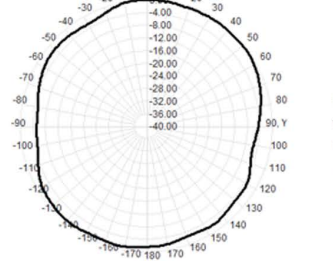
600.0MHz H-V, Eff: 42.5%



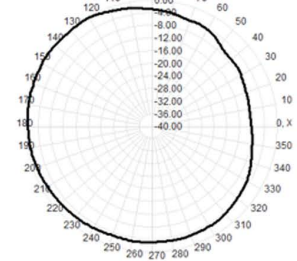
600.0MHz Total[E1-XZ], Max= 0.55dBi



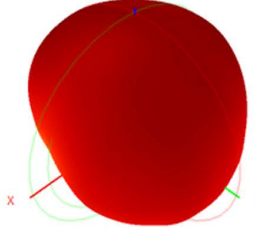
600.0MHz Total[E2-YZ], Max= -0.87dBi



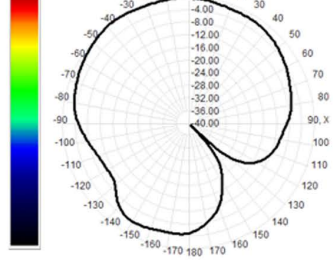
Total[H-XY], Max= -2.65dBi, CirD=8.72



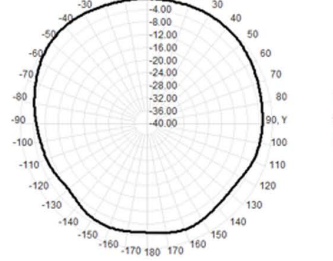
700.0MHz H-V, Eff: 46.3%



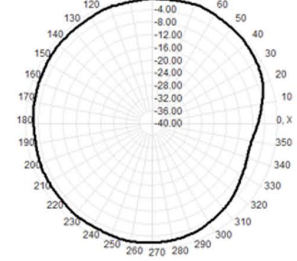
700.0MHz Total[E1-XZ], Max= 0.21dBi



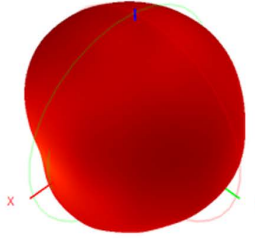
700.0MHz Total[E2-YZ], Max= 0.50dBi



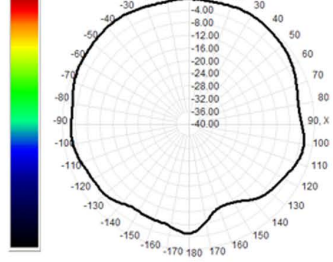
Total[H-XY], Max= -2.27dBi, CirD=8.14



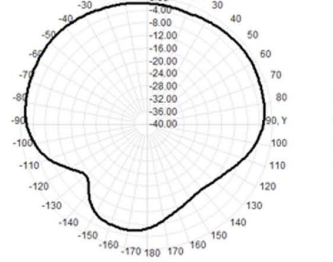
800.0MHz H-V, Eff: 48.3%



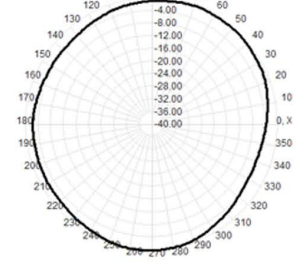
800.0MHz Total[E1-XZ], Max= -0.73dBi



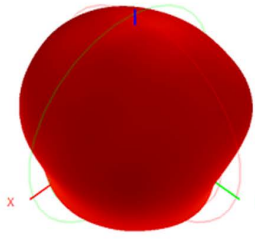
800.0MHz Total[E2-YZ], Max= 0.83dBi



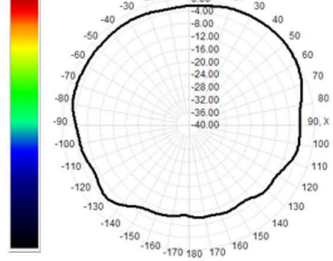
Total[H-XY], Max= -1.19dBi, CirD=4.98



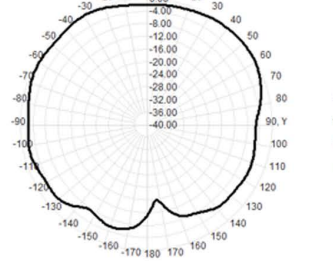
900.0MHz H-V, Eff: 37.5%



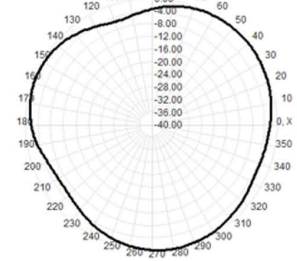
900.0MHz Total[E1-XZ], Max= -0.85dBi



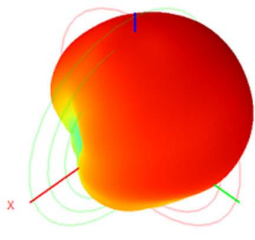
900.0MHz Total[E2-YZ], Max= -1.17dBi



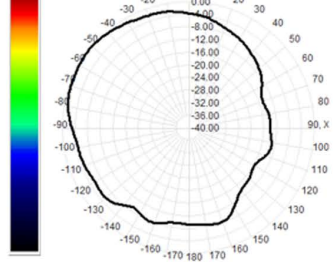
Total[H-XY], Max= -3.25dBi, CirD=6.01



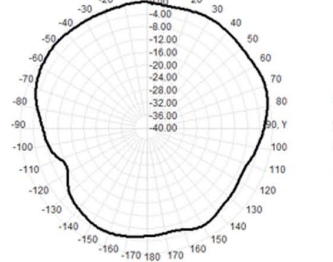
960.0MHz H-V, Eff: 51.6%



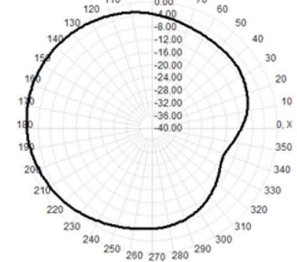
960.0MHz Total[E1-XZ], Max= 3.03dBi



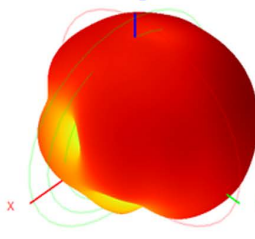
960.0MHz Total[E2-YZ], Max= -0.56dBi



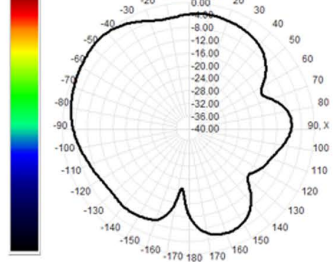
Total[H-XY], Max= 0.44dBi, CirD=15.66



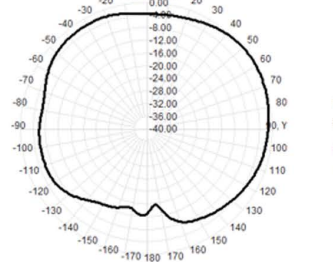
1700.0MHz H-V, Eff: 51.0%



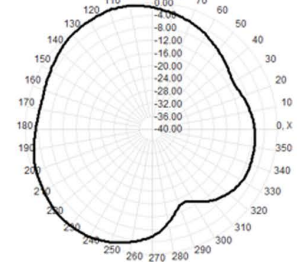
1700.0MHz Total[E1-XZ], Max= 0.64dBi

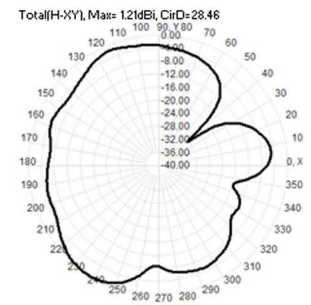
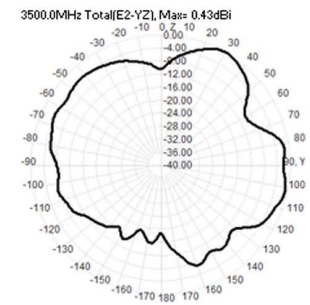
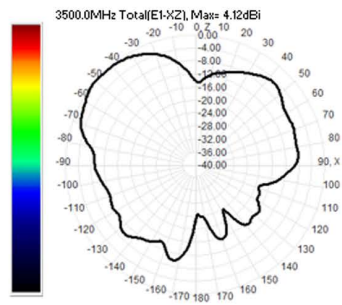
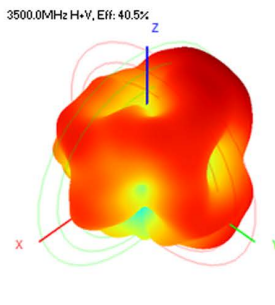
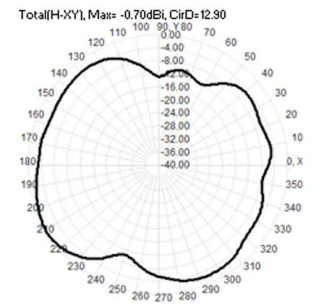
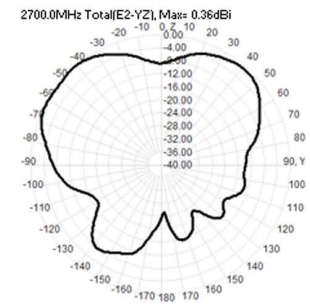
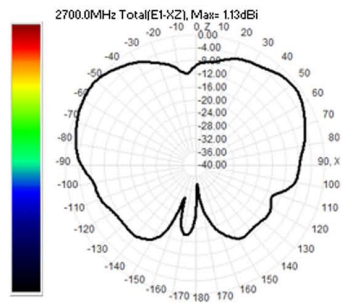
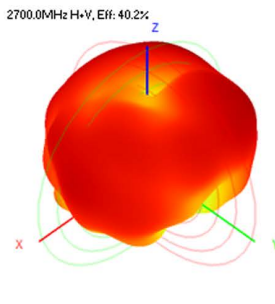
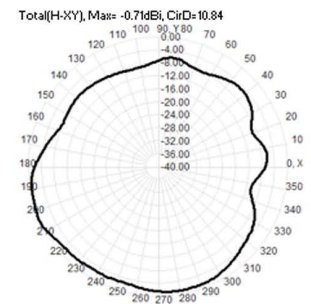
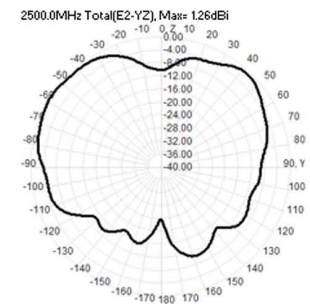
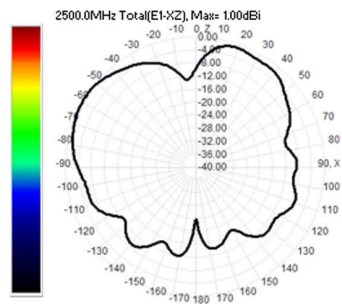
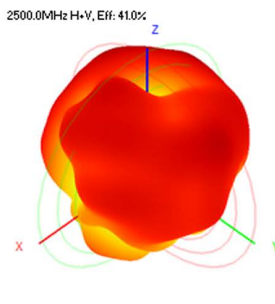
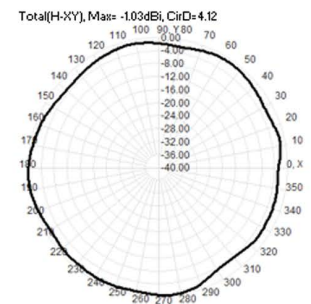
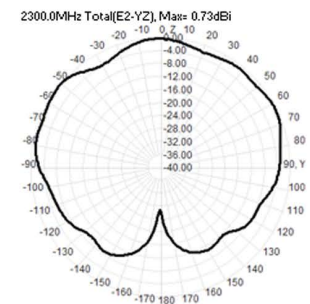
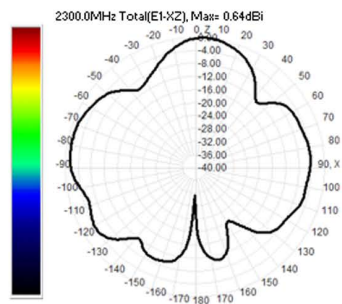
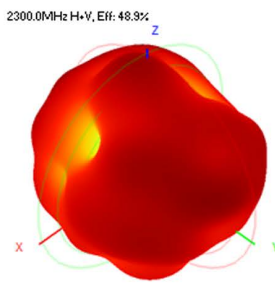
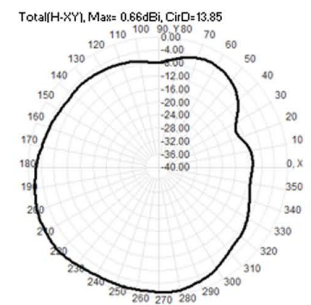
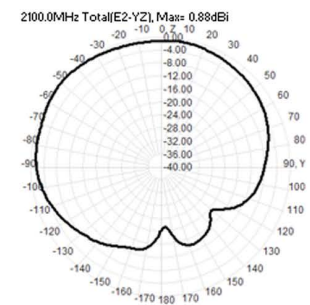
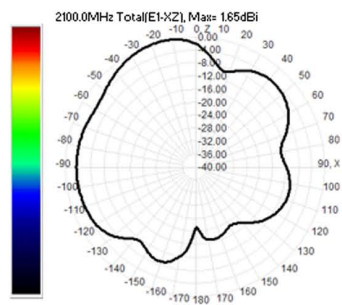
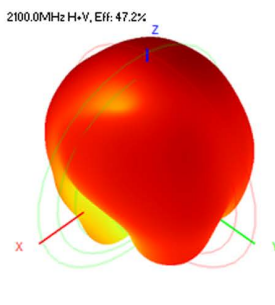
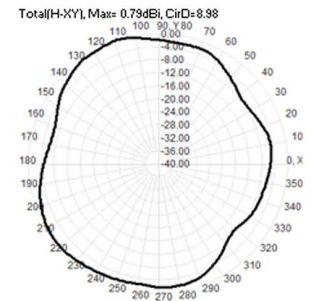
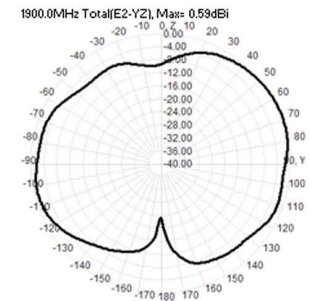
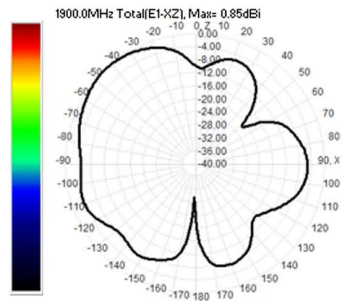
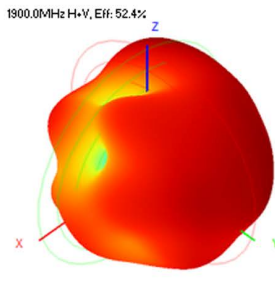


1700.0MHz Total[E2-YZ], Max= 0.62dBi

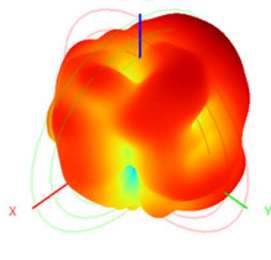


Total[H-XY], Max= 0.53dBi, CirD=14.85

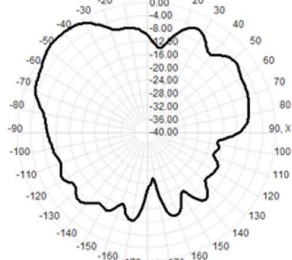




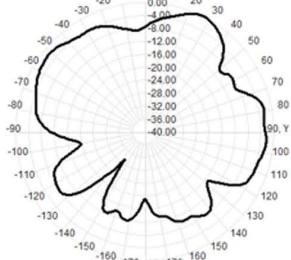
3600.0MHz H-V, Eff: 47.5%



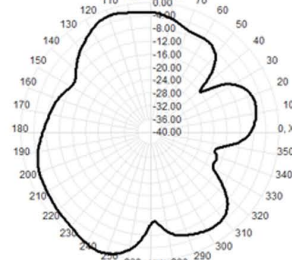
3600.0MHz Total(E1-XZ), Max= 4.51dBi



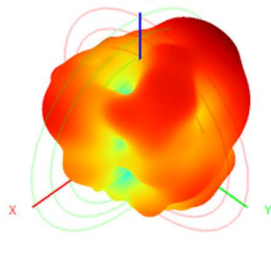
3600.0MHz Total(E2-YZ), Max= 2.06dBi



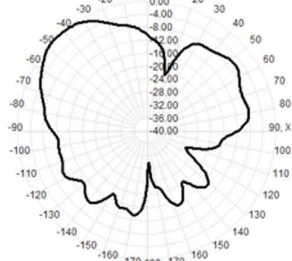
Total(H-XY), Max= 2.19dBi, CirD=20.31



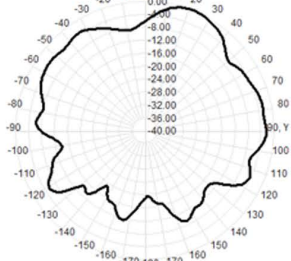
3700.0MHz H-V, Eff: 52.0%



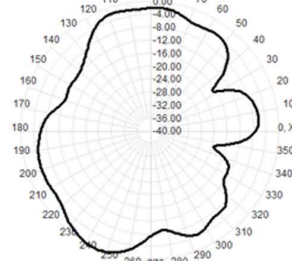
3700.0MHz Total(E1-XZ), Max= 5.61dBi



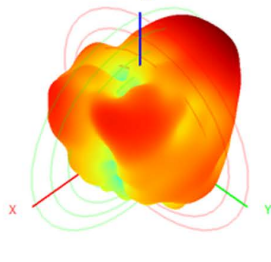
3700.0MHz Total(E2-YZ), Max= 1.63dBi



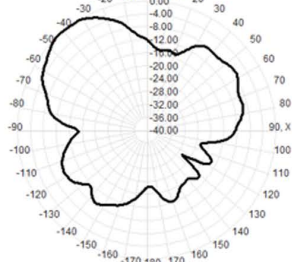
Total(H-XY), Max= 1.12dBi, CirD=20.08



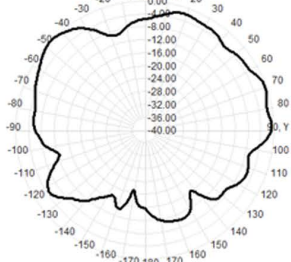
3800.0MHz H-V, Eff: 51.1%



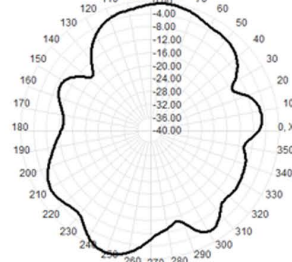
3800.0MHz Total(E1-XZ), Max= 6.36dBi



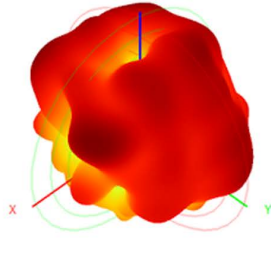
3800.0MHz Total(E2-YZ), Max= -0.01dBi



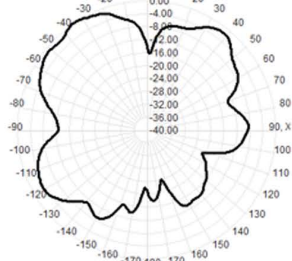
Total(H-XY), Max= 0.02dBi, CirD=15.56



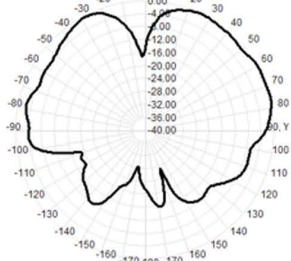
4800.0MHz H-V, Eff: 32.1%



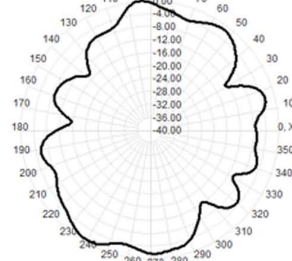
4800.0MHz Total(E1-XZ), Max= -0.38dBi



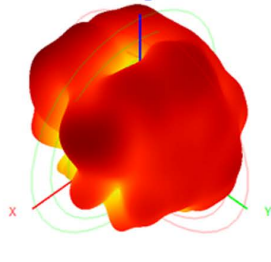
4800.0MHz Total(E2-YZ), Max= 0.20dBi



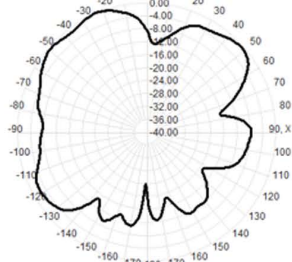
Total(H-XY), Max= -1.99dBi, CirD=15.65



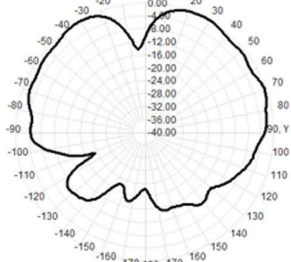
5000.0MHz H-V, Eff: 33.2%



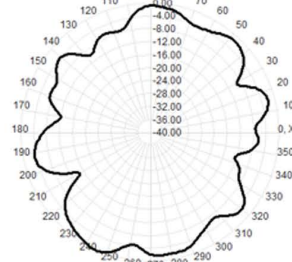
5000.0MHz Total(E1-XZ), Max= -1.46dBi



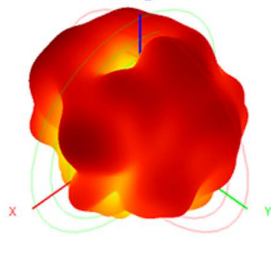
5000.0MHz Total(E2-YZ), Max= 0.24dBi



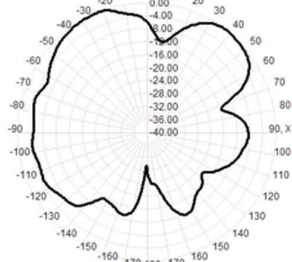
Total(H-XY), Max= -1.93dBi, CirD=14.86



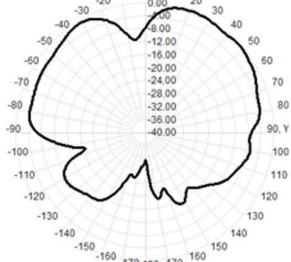
5200.0MHz H-V, Eff: 32.7%



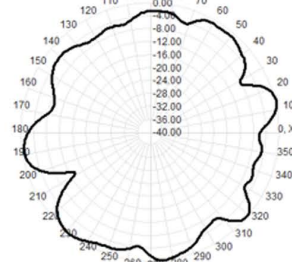
5200.0MHz Total(E1-XZ), Max= -1.09dBi



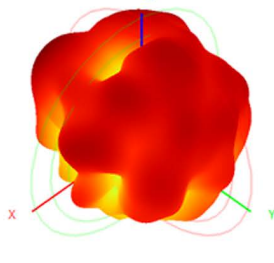
5200.0MHz Total(E2-YZ), Max= 0.94dBi



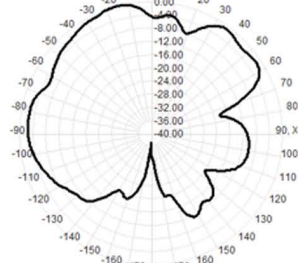
Total(H-XY), Max= -3.66dBi, CirD=13.72



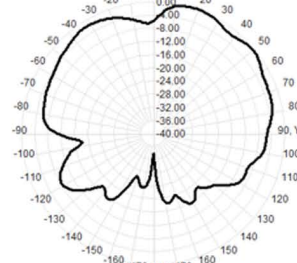
5400.0MHz H-V, Eff: 33.5%



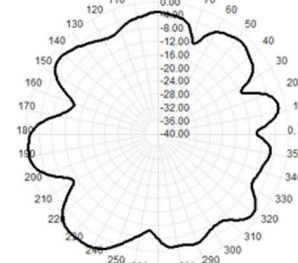
5400.0MHz Total(E1-XZ), Max=-0.92dBi



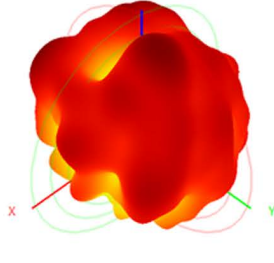
5400.0MHz Total(E2-YZ), Max= 0.58dBi



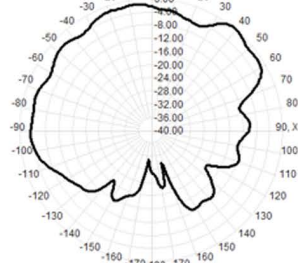
Total(H-XY), Max=-1.89dBi, CirD=13.20



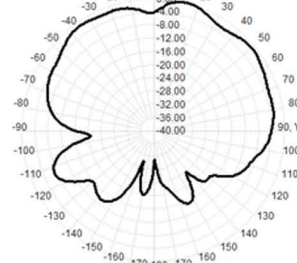
5600.0MHz H-V, Eff: 34.6%



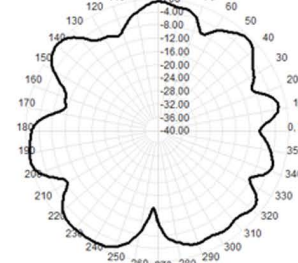
5600.0MHz Total(E1-XZ), Max=-0.86dBi



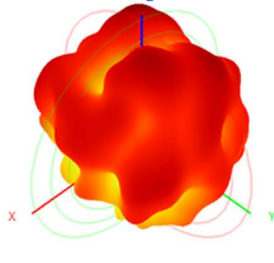
5600.0MHz Total(E2-YZ), Max= 1.02dBi



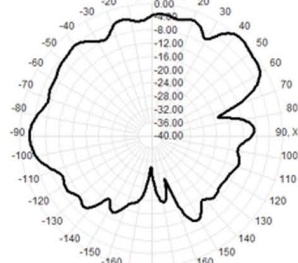
Total(H-XY), Max=-2.35dBi, CirD=16.47



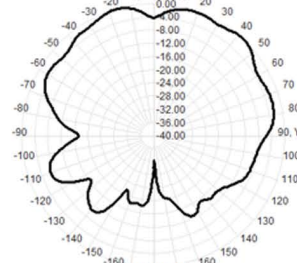
5800.0MHz H-V, Eff: 32.3%



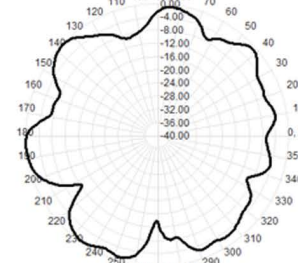
5800.0MHz Total(E1-XZ), Max=-0.44dBi



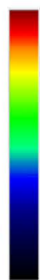
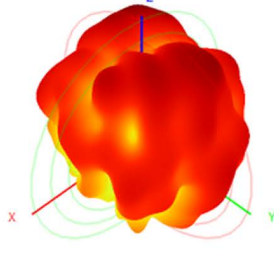
5800.0MHz Total(E2-YZ), Max= 0.22dBi



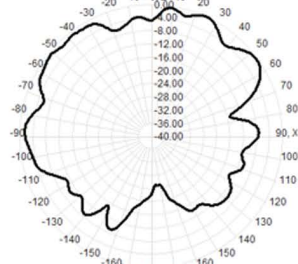
Total(H-XY), Max=-3.12dBi, CirD=14.37



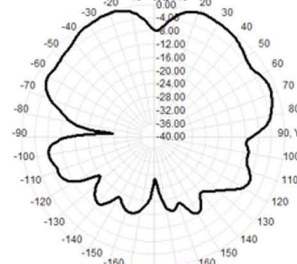
6000.0MHz H-V, Eff: 31.2%



6000.0MHz Total(E1-XZ), Max=-1.72dBi



6000.0MHz Total(E2-YZ), Max= 1.29dBi



Total(H-XY), Max=-2.07dBi, CirD=23.09

